

Secure Enterprise Email for Smarter Teamwork

As a trusted enterprise-grade email platform, HCL Verse helps you manage your daily work enabling you to communicate and collaborate from anywhere, on virtually any device you choose. Verse lets you take control of your inbox by delivering an intuitive and efficient user experience displaying the information that matters most to you - empowering you to get work done faster.

Teamwork – Just a Click Away

Boost your productivity by composing an email, creating a calendar event, or starting a chat, all without leaving your inbox.

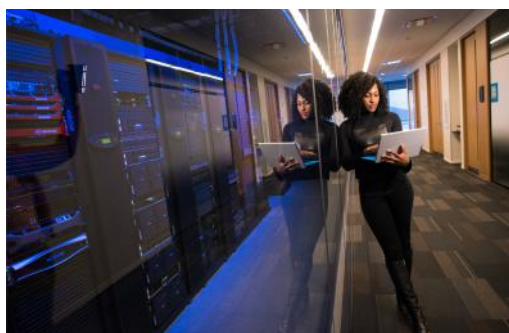


Nothing to Install – Access Email Anywhere

Our web client option provides the ultimate convenience to access email on virtually any device without installing or upgrading apps – even work off-line.

Simplified Administration, Upgraded Performance

Verse deploys in minutes, and our admin settings enable you to expose mail features that optimize your user's experience.



Rock Solid Security Whether On-Premises or Cloud

Regardless of your deployment choice, on-prem or cloud, secure and protect your data privacy with Verse running on our proven, trusted Domino platform.

Boost productivity with personalized, clutter free email that knows how you work.

Key Features

Benefits

- | | |
|---|---|
| ◆ Manage work without leaving your inbox | Work more efficiently within your inbox while viewing calendar -at-a-glance and your most recent contacts -no need to shuffle through multiple apps and browser tabs to get your work done. |
| ◆ Never lose focus on important priorities | Save time and improve your focus by easily identifying and flagging tasks in your inbox that require timely action. |
| ◆ Create the mail user experience your employees need | Use Verse customization to deliver an efficient user experience and create a brand standard that matches your company's preferred way of working. |
| ◆ Take the worry out of data security and privacy | Secure your data with Domino as your mail server, whether choosing on-premises or cloud deployment, you maintain full control of your data privacy. |
| ◆ Reduce unnecessary interruptions and overbooked meetings | Receive Sametime chat alerts and make your availability status visible to colleagues. Use one-click chat and meeting to collaborate in a faster, more direct way. |
| ◆ Stay connected with your colleagues and work teams | Be more productive on the go – access mail and stay connected with information and colleagues regardless of your device and client choice. |
| ◆ Access new features and capabilities immediately | Always have the most up-to-date email web client and access to all the latest features – no need to spend time downloading or updating apps. |
| ◆ Save time writing emails by creating email templates | Create, edit, and use email templates again and again. A simplified way to compose emails, saving you time and effort. |
| ◆ Quickly select meeting URL's from a list when sending email invites | Store all relevant meeting information within HCL Verse and each time you send an invite, simply select the meeting from a list. |
| ◆ Reduce number of applications needed to preview email | Increase user adoption by reducing the number of applications needed to preview an email attachment with File Preview. |

[Learn More](#)

HCLSoftware



About HCLSoftware

HCLSoftware is a division of HCLTech (HCL) that operates its primary software business. It develops, markets, sells, and supports over 30 product families in the areas of Digital Transformation, Data Analytics & Insights, AI and Automation, and Enterprise Security. HCLSoftware has offices and labs around the world to serve thousands of customers. Its mission is to drive ultimate customer success with their IT investments through relentless innovation of its products.